

Using Custom Tags

The following are instructions on how to turn on and use the enclosed custom templates. They may be freely used and modified. Weather Display custom tags makes this easy!

Templates are best modified with either a plain-text editor (like Notepad) or WD's own HTML editor. Do not try to modify these templates in a WYSIWYG web

1) Turning on FTP (FTP uploads your custom files)

(Provided by JaxWeather at <http://jaxweather.net/>)

We cannot stress, too much, asking your web host for some of the information required below as hosts vary widely in their "default" settings.

The information you will require that is best supplied by your host is as follows:

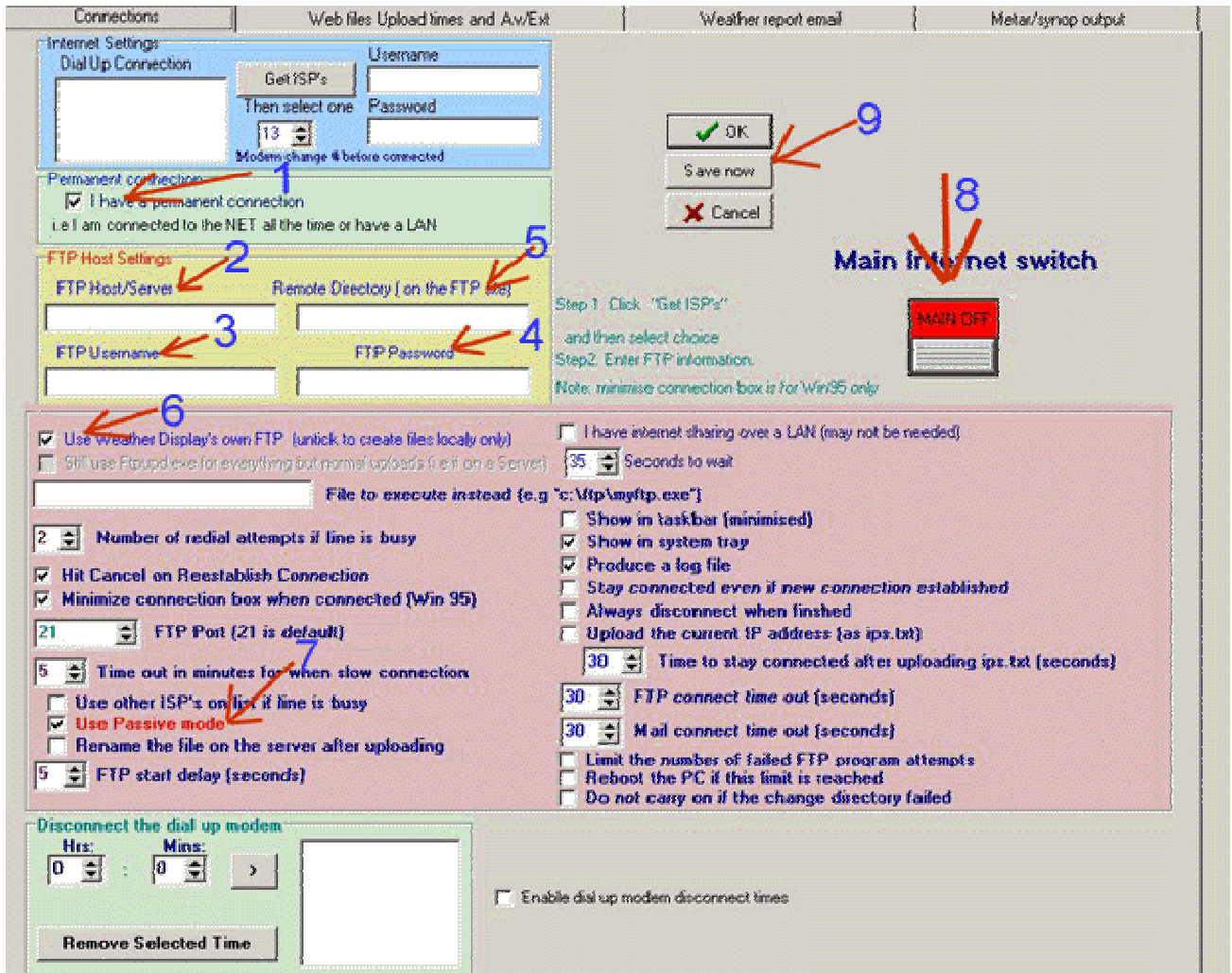
FTP Host:

FTP Username:

FTP Password:

Path to web files directory:

- Open Weather Display
- Click on "Control Panel" menu item.
- Click on "FTP" button
- Click on "Connections" menu tab



1
If your Computer is connected to the Internet (in any manner) 24 X 7 select this, if not don't

2
FTP Host name (**Note 2**): This you will have to obtain from your web host provider, generally something similar to:
ftp.example.com

3 - 4
FTP Username and Password: Again these will generally be assigned to you by your web host provider
(Whatever you use for regular FTP purposes will be the same)

5
Remote Directory (on the FTP site) (**Note 2**): This is highly dependent on your web host and usually it is best to either ask or refer to the set up information provided to you when you set up your account under any FTP information provided.
Some hosts may allow you to leave blank and you would automatically drop your files into the web accessible location, many will require a path no matter where you are placing the files.

A path would look something like:
/public_html
/www
/home/public_html

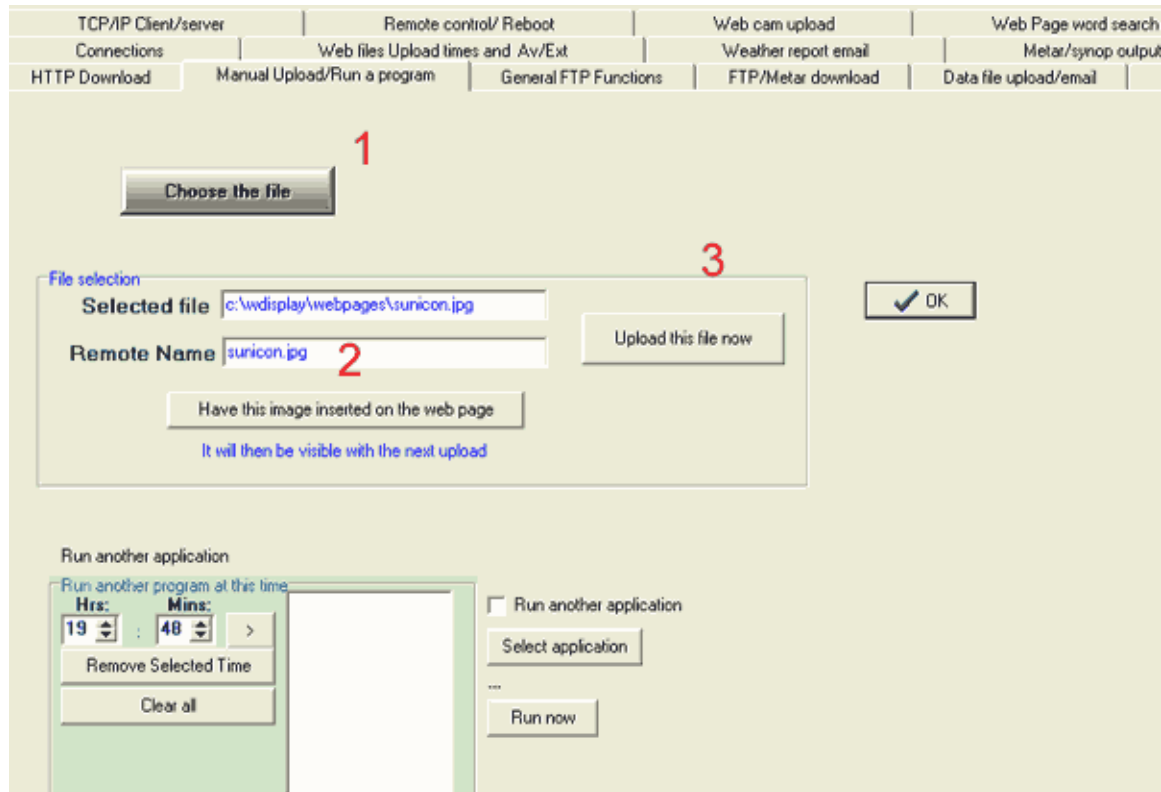
6
Make sure "Use Weather Display's own FTP" is ticked.

7
Most hosts appear to either require Passive or it doesn't matter so usually using Passive is best and you would want to leave this ticked for now.

8
Must be Turned "ON"

9
Press "Save"

2) Upload web images



1
Choose file from hard drive. Go to file(s) location on your computer

2
Make sure file name is the same as in the folder, all lower case, with no spaces

3

Click “Upload this file now”

Then click on “OK” button.

You will want to upload:

firstquartermoon.jpg

fullmoon.jpg

lastquartermoon.jpg

newmoon.jpg

sunicon.jpg

weather-print.css

weather-screen.css

You only have to do this once to get the files onto your website. The files are static and do not change.

2) Setup files for regular uploading

Place all nine of your wxlocal[2-9].html files in your Weather Display web files folder (Default is “c:\wdisplay\webfiles”)

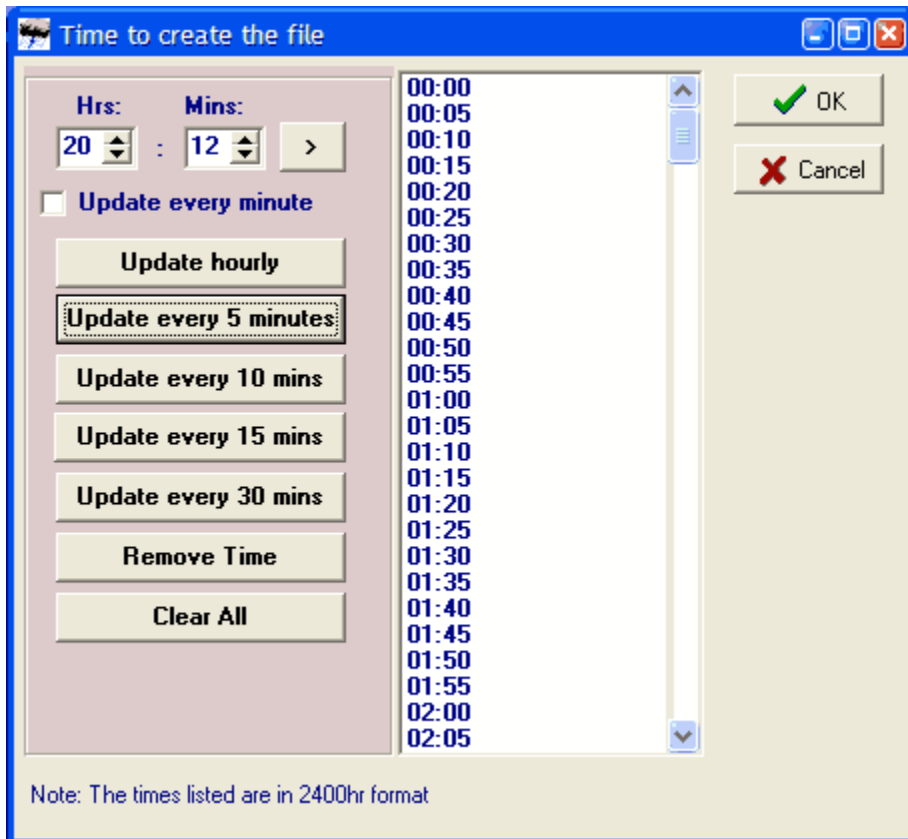
Then, open WD and....

- Click on “Control Panel” menu item.
- Click on “Custom Internet File Creation” button
- Scroll down...

Internet File settings						
File #7	individual dial images	Set	Now	<input type="checkbox"/> 1 minute	Set	Now
File #8	dailyhighlowbaroetc.gif	Set	Now	<input type="checkbox"/> 1 minute	Set	Now
File #9	trends.gif	Set	Now	<input type="checkbox"/> 1 minute	Set	Now
File #10	energy.gif	Set	Now	<input type="checkbox"/> 1 minute	Set	Now
File #11	curr. 24/48/72 hr graphs	Set	Now	<input type="checkbox"/> 1 minute	Set	Now
File #12	dirplot.gif	Set	Now	<input type="checkbox"/> 1 minute	Set	Now
File #13	alltimerecords.gif	Set	Now	<input type="checkbox"/> 1 minute	Set	Now
File #14	largedisplay.gif	Set	Now	<input type="checkbox"/> 1 minute	Set	Now
File #15	gizmo.gif (and conditionscolour.jpg)	Set	Now	<input type="checkbox"/> 1 minute	Set	Now
File #16	individual gizmo's	Set	Now	<input type="checkbox"/> 1 minute	Set	Now
File #17	autoscalegraphs	Set	Now	<input type="checkbox"/> 1 minute	Set	Now
File #18	summary.gif	Set	Now	<input type="checkbox"/> 1 minute	Set	Now
File #19	localweather/weatherbanmer.gif	Set	Now	<input type="checkbox"/> 1 minute	Set	Now
File #20	forecasticon.gif	Set	Now	<input type="checkbox"/> 1 minute	Set	Now
File #21	metar.gif	Set	Now	<input type="checkbox"/> 1 minute	Set	Now
File #22	wxlocal.html	Set	Now	<input type="checkbox"/> 1 minute	Set	Now
File #23	wxlocal2.html	Set	Now	<input type="checkbox"/> 1 minute	Set	Now
File #24	wxlocal3.html	Set	Now	<input type="checkbox"/> 1 minute	Set	Now
File #25	wxlocal4.html	Set	Now	<input type="checkbox"/> 1 minute	Set	Now
File #26	wxlocal5.html and above	Set	Now	<input type="checkbox"/> 1 minute	Set	Now
File #27	VP UV solar etc graph	Set	Now	<input type="checkbox"/> 1 minute	Set	Now
File #28	clientraw.txt				Set	Now
File #29	Special custom file convers	Set	Now	<input type="checkbox"/> 1 minute	Set	Now
File #30	Lightning count graph	Set	Now	<input type="checkbox"/> 1 minute	Set	Now
File #31	Extra moon details	Set	Now	<input type="checkbox"/> 1 minute	Set	Now
File #32	Moon icon	Set	Now	<input type="checkbox"/> 1 minute	Set	Now

The items in red circles are what we're interested in. We need to setup generation times and upload times.

First, click on the left "set":



Click on whatever generation timeframe you're comfortable with.

You'll also want to do the same for the second "set" for uploading. Repeat the same procedure. You'll want the create and upload times to be the same.

Next, if the file name for wxlocal.html is set to "wx.html" or "wx.htm", change it to either "index.htm" or "index.html". This will make your wxlocal.html into your homepage.

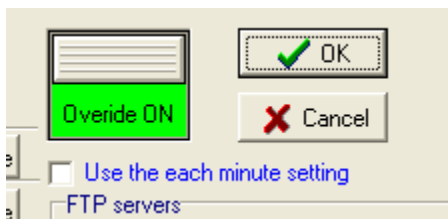
Recommended times:

All wxlocalX.html pages: Update every 5 minutes

Graphs and Dirplot: Update every 15 minutes

Moon Icon: Update every hour

After you are done setting generation and upload times for the moon graphic, scroll back up to the top.



Turn "Override" to ON and click OK.

Your files are now being created and uploaded. Our last step is to turn on NOAA forecasts.

4) Setup NOAA forecasts

(Provided by Snowman at <http://lancaster.weather-watch.com/>)

First, you need to know your NOAA zone.

I suggest looking at this file:

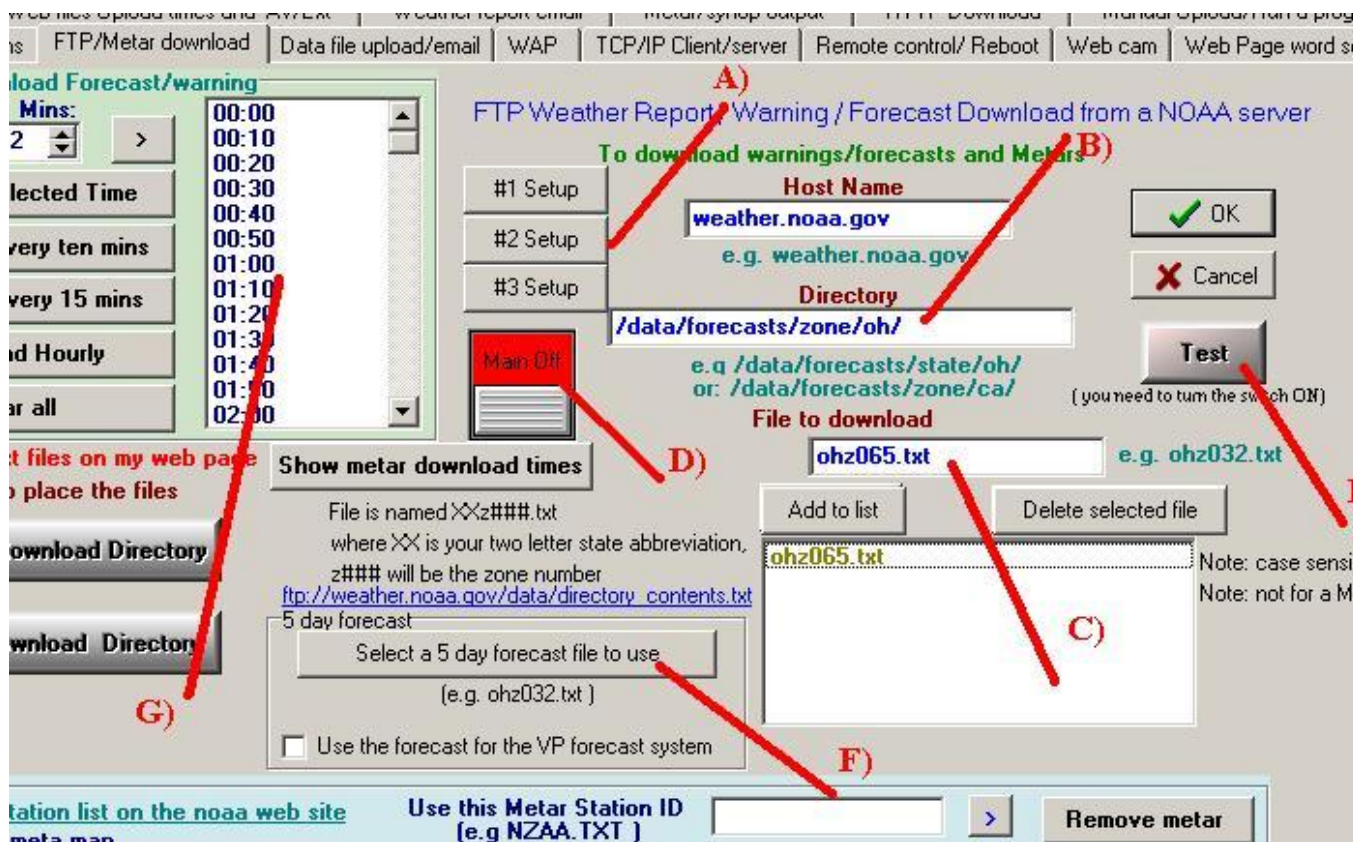
http://members.cox.net/carterlakeweather/NOAA_Zone_Codes.txt

Or by looking at these maps on NOAA:

http://www.weather.gov/mirs/public/prods/maps/pfzones_list.htm

Now in Weather Display, go to
setup
control panel
FTP/Internet/meter/email/etc...
then
FTP/METER download

Now in Weather Display, go to
setup
control panel
FTP/Internet/meter/email/etc...
then
FTP/METER download



- A) Select #2 Setup
- B) Enter **/pub/data/forecasts/zone/xx** where xx is your state abbreviation
- C) Enter your local forecast area followed by .txt. In my case it is **ohz065.txt** CASE SENSITIVE! All lowercase letters! (note - then click the button "add to list")
- D) Select **Main On**
- E) Select **Test**
Your forecast should now be downloaded.
- F) Now **Select a 5 day forecast file to use** and steer to where your forecast is downloaded to. Most likely it is **c:\wdisplay** It will be the same name as you enter in step C)
- G) Now select how often you want to download the forecast.

5) Setup NOAA Advisories

(Provided by Tom at <http://www.carterlake.org>)

Proper way to setup NOAA Advisories

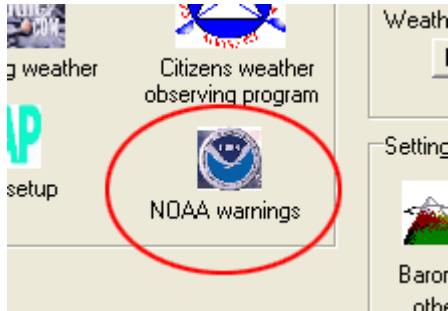
In order to setup the proper advisory, you need to determine what NOAA zone code to use. You can either view all of them here:
http://members.cox.net/carterlakeweather/NOAA_Zone_Codes.txt

Or look at a map of NOAA zones here:

http://weather.gov/mirs/public/prods/maps/pfzones_list.htm

So now we know we need NEZ052 if we want to use the zone for Omaha, Nebraska.

Next we need to open Weather Display (WD) and go to SETUP... CONTROL PANEL... and click on the NOAA warnings icon.



This will open the NOAA warnings menu.

A screenshot of the NOAA warnings configuration window. The window has a title bar with an 'OK' button. It contains a 'Select state' dropdown menu with 'Nebraska' selected, a 'Go' button, and a 'Zones found' list box. Below the dropdown is a text input field containing '#NEZ052'. There are several checkboxes: 'Remember next time' (checked), 'Include in my default WD web page' (unchecked), and 'Show a scrolling ticker' (unchecked). A 'Link URL' field is partially visible. At the bottom, there is an 'Update interval' section with two options: 'Auto update every hour selected' (unchecked) and 'Auto update every 10 minutes selected state' (checked).

The first thing you want to do is select your state or US protectorate (sorry US only) in the pull down. In this case, it's Nebraska.

Next you want to put in the zone we researched earlier "NEZ052".

But before we do that, I need to explain a little bit about where this data is coming from and why you don't want to just put in NEZ052. Brian, the creator and developer of WD, uses the NOAA experimental XML to find advisories. How

WD does this is to search through the XML looking for "NEZ052". There are times when it finds this in the wrong place. Therefore, I have found that adding a pound sign to one end and a period to the other allows for 100% accurate matching of the correct zone advisory.

<http://www.nws.noaa.gov/alerts/>

So I enter "#NEZ052." as shown.

Next, we check "Remember next time" so we don't lose our settings.

All settings below that are optional. I also have checked "Auto update every 10 minutes" so that it's always checking for new advisories.

Hit OK to exit and you're good to go.

And that's it! Your custom website should now be setup and being uploaded.

Further info:

Weather Watch forums – Great place for information and help

<http://www.weather-watch.com/smf/>

Weather Display

<http://www.weather-display.com/index.php>

WD Online Help Guide

<http://www.tokaanuskihire.co.nz/wdhelp/index.shtml>

WD Custom Tags Listing

<http://www.tokaanuskihire.co.nz/wdhelp/custom.shtml>

Guide put together by Tom at Carterlake.org

<http://www.carterlake.org>

Special thanks to Kevin at TNET Weather

<http://www.tnetweather.com>